



## How do I Apply the Microsoft Excel 2007 Analysis Toolpack Regression Chart Bug Workaround?

There is a known issue in the Analysis ToolPak of Microsoft Excel 2007. The Regression tool in the Analysis ToolPak in Excel 2007 does not display residual and line fit plots correctly. For more information on this problem please see: <http://itinfo.mit.edu/article.php?id=8494>

This issue has been documented to Microsoft and a hotfix is currently being developed for release by the end of September 2007. In the meantime, a work around has been implemented for users who need to use the Regression Tool.

Step	Procedure
1	<p>Once a regression analysis is run, users will only see one residual plot for the first column of data. Any additional residual plots and all line fit plots will be missing (this is the bug; see picture below).</p> <p>The workaround involves an Excel Add-In that has been installed on all <a href="#">Haas Terminal Servers</a>. The workaround installs a button called <b>Fix Regression Charts</b> which is located under the <b>Data Analysis</b> button on the Excel 2007 menu.</p>

The screenshot shows the Microsoft Excel 2007 interface. The 'Data Analysis' button in the 'Analysis' group of the 'Data' ribbon is circled in red, with a mouse cursor pointing to the 'Fix Regression Chart' option. The spreadsheet displays the following data:

Regression Statistics	
Multiple R	0.90949
R Square	0.82718
Adjusted R Square	0.75805
Standard Error	10.4326
Observations	8

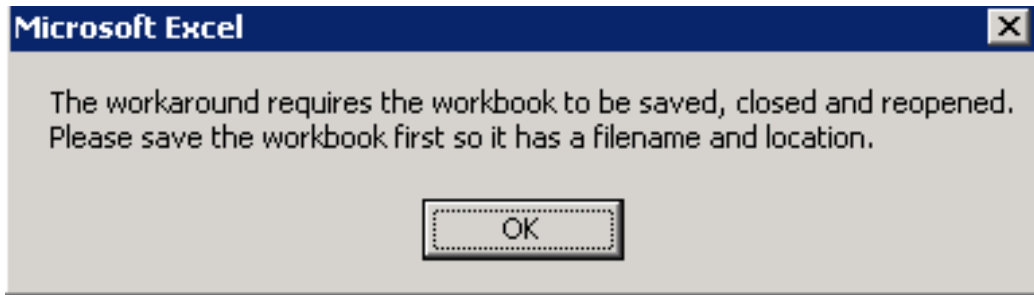
ANOVA					
	df	SS	MS	F	Significance F
Regression	2	2604.68	1302.34	11.9657	0.01242
Residual	5	544.197	108.839		
Total	7	3148.88			

	Coefficient	Standard Error	t Stat	P-value	Lower 95%	Upper 95%	Lower 95.0%	Upper 95.0%
Intercept	-0.26434	11.8911	-0.02223	0.98312	-30.8314	30.3028	-30.8314	30.3028
Rating	15.4137	3.19185	4.82909	0.00476	7.2088	23.6186	7.2088	23.6186
Customer	-0.00442	0.02208	-0.20019	0.84922	-0.06119	0.05235	-0.06119	0.05235

Step	Procedure
------	-----------

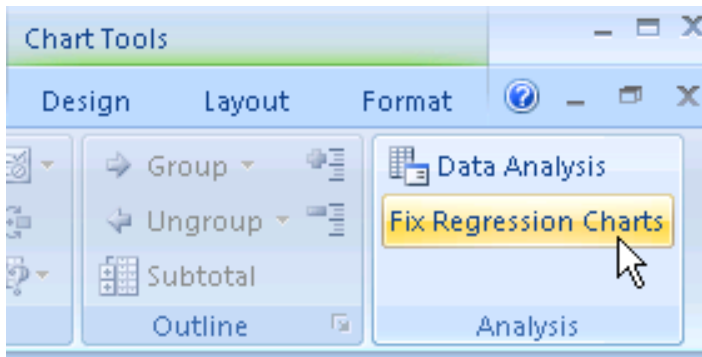
Before running the workaround, you must save your workbook



Step	Procedure
------	-----------

3

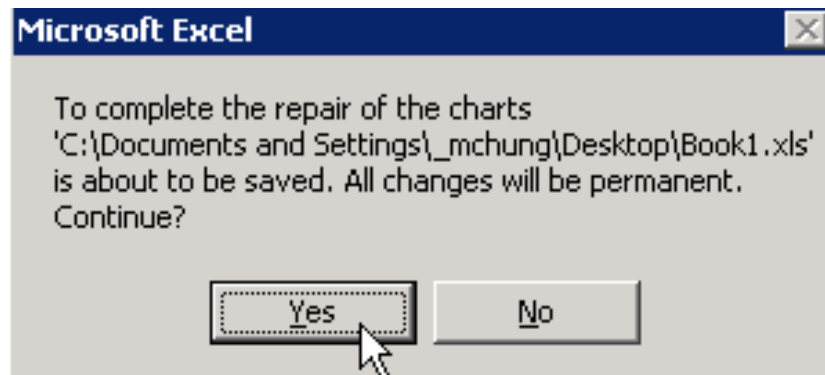
Once you have saved your workbook, click the **Fix Regression Charts** button on the toolbar



Step	Procedure
------	-----------

4

The workaround will need to re-save your workbook in order to complete the fix. Click **YES** to save and continue. If you click **no** to save, you will need to save your workbook manually, close the workbook, and reopen it in Excel in order to complete the fix.



Step	Procedure
5	The workbook now correctly shows all charts (see picture below).

