

Installing Mathematica Fonts for Exceed v 8.0

I. Getting the fonts-

1.) Download .PCF font files from the Wolfram research website

<http://support.wolfram.com/mathematica/systems/unix/interface/pcf.html>

- a. select the link for .PCF zip files
- b. unzip the .PCF fonts into a named directory for later use

2.) Create the following “mathematica” folder on your C: drive under –

“C:\program files\hummingbird\connectivity\8.00\exceed\font”

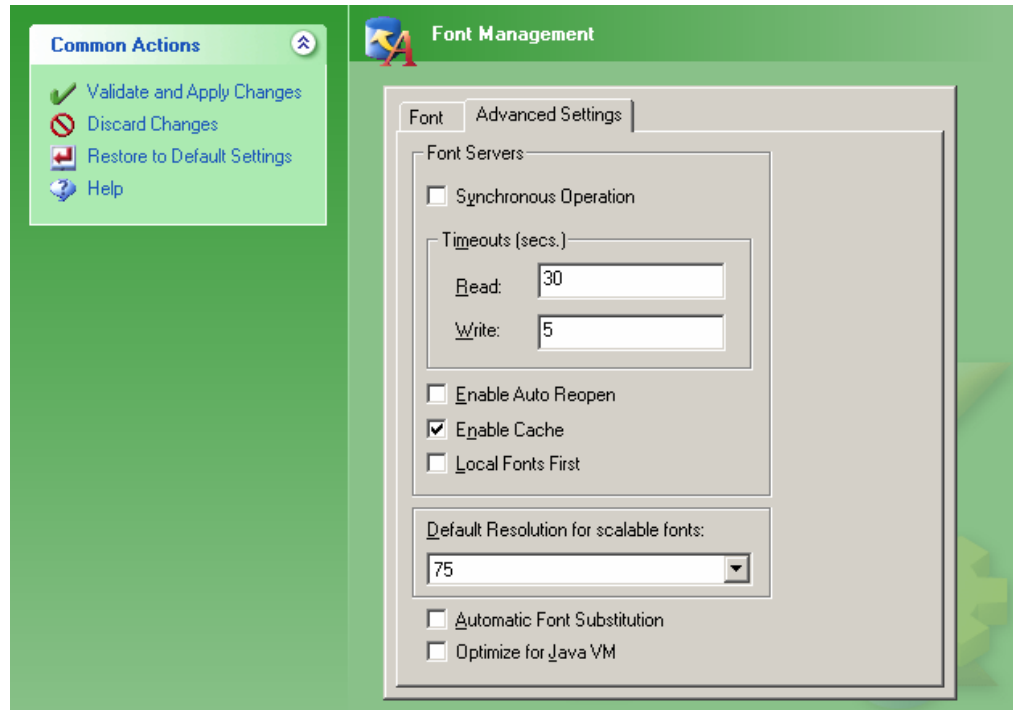
II. Adding and compiling the fonts-

1.) Go to START>Programs>Hummingbird Connectivity V8.0>Exceed>Xconfig

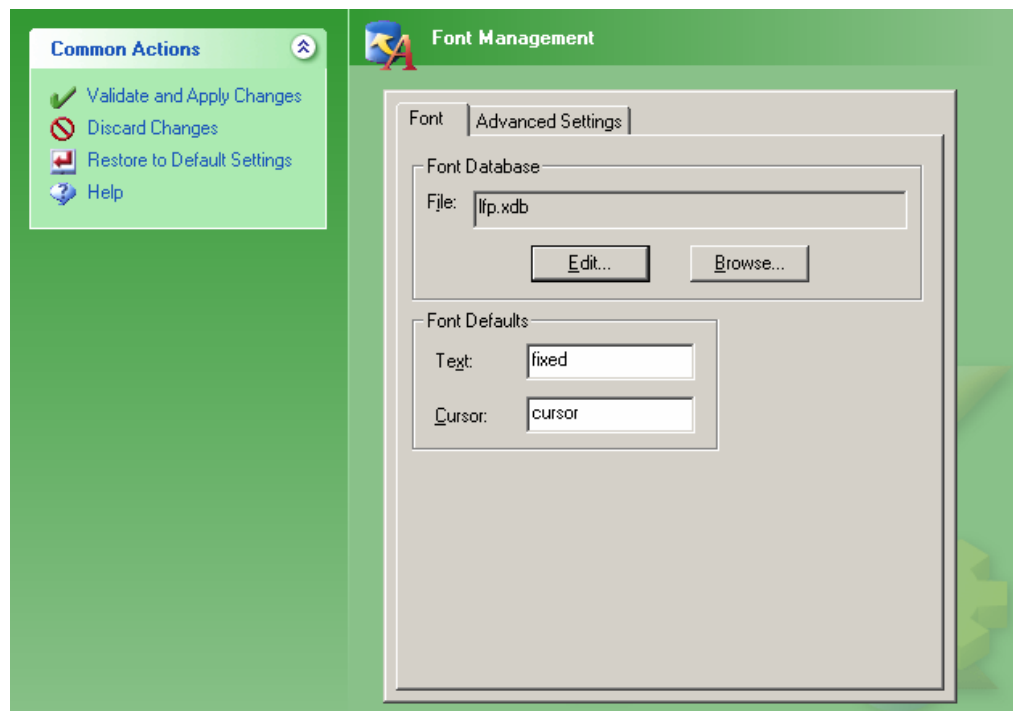
2.) Double-click on the FONT MANAGEMENT icon within the Exceed.xcfg – Xconfig dialogue window



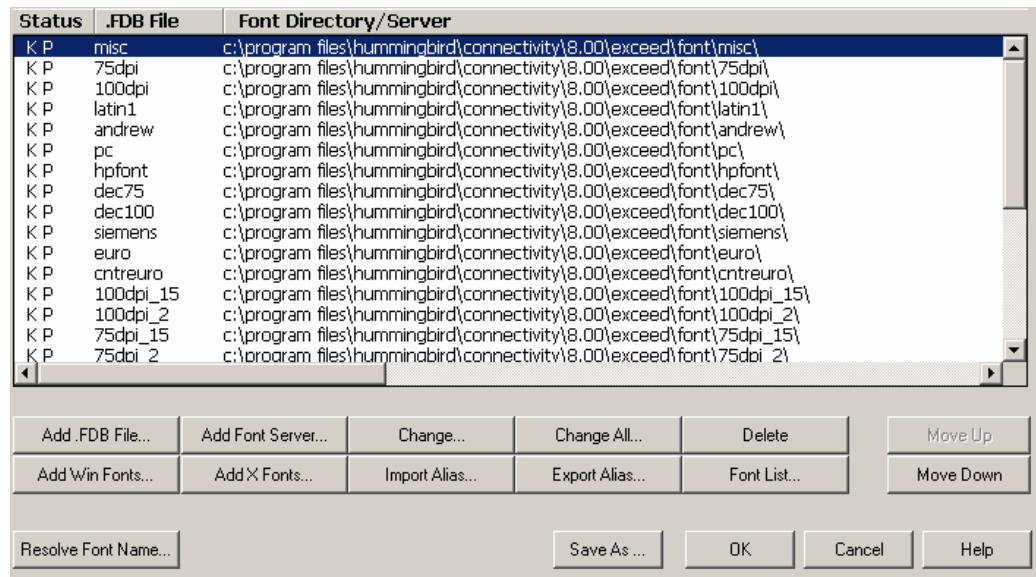
- 3.) Select the ADVANCED SETTINGS tab and uncheck the option box for “Automatic Font Substitution”



- 4.) Now, select the FONT tab and click on the “Edit...” button

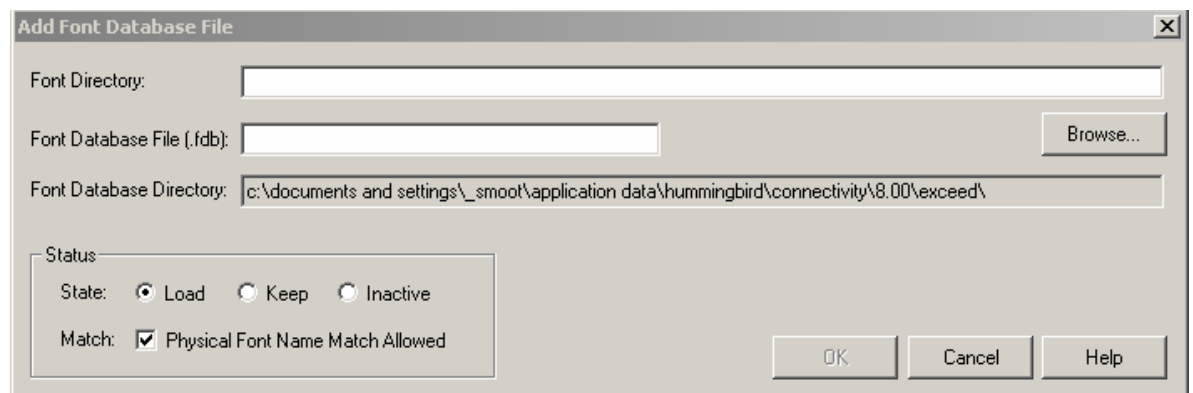


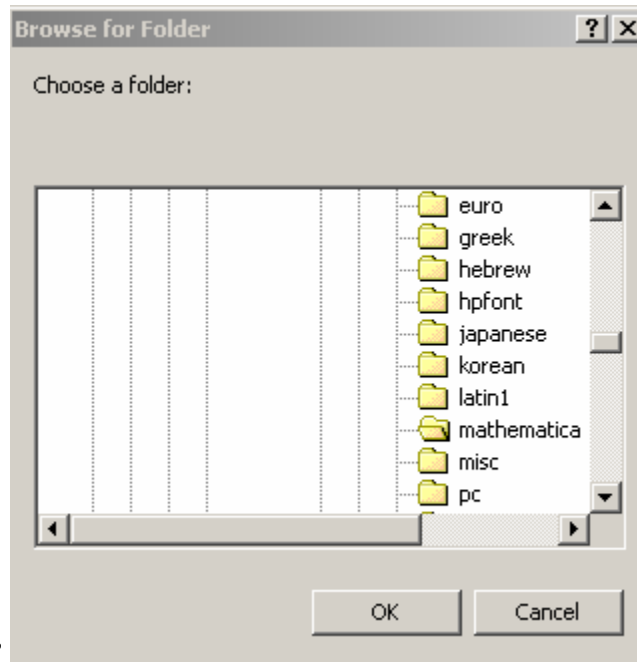
- 5.) Click the “Add .FDB File...” button within the “FONT DATABASE: lfp.xdb – Xfonts” window



- 6.) Click the “Browse...” button and go to your “mathematica” folder under-

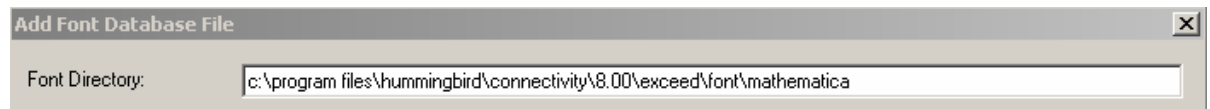
“C:\program files\hummingbird\connectivity\8.00\exceed\font”



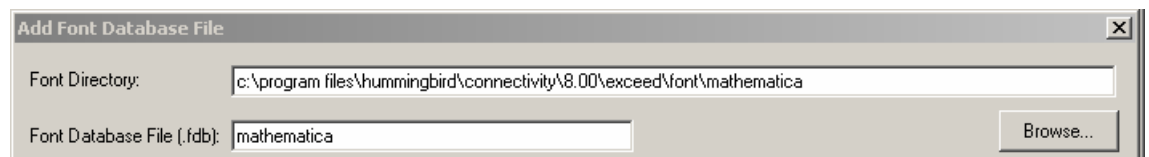


and then click “OK”

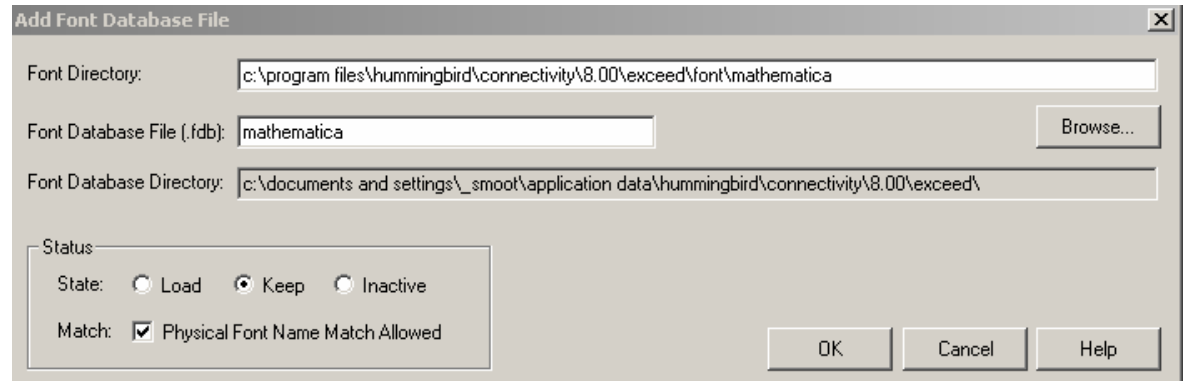
The path to your “mathematica” folder should now appear in the “Font Directory:” text field



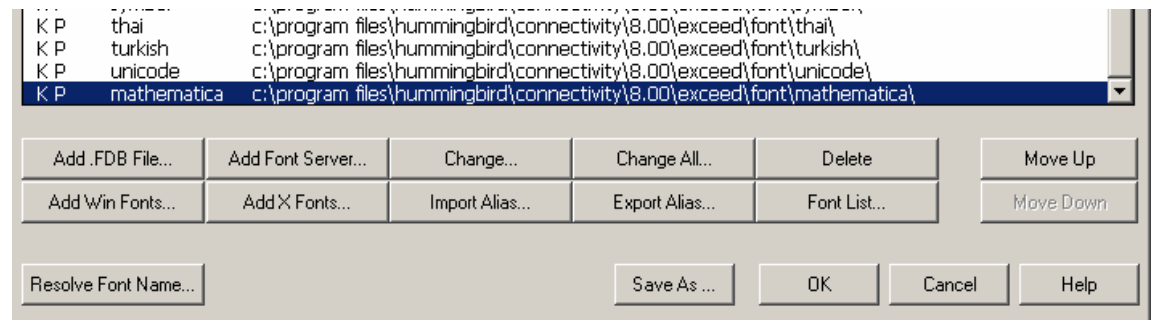
Within the “Font Database File (.fdb):” text window, type “mathematica”



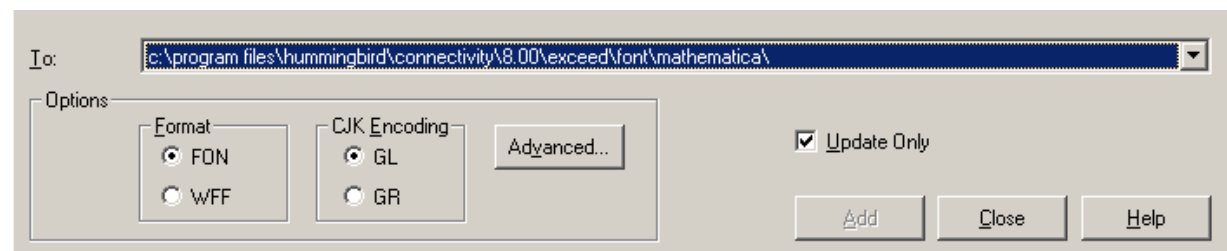
Under the “STATUS” pane, select “KEEP” and then click “OK” to close the window



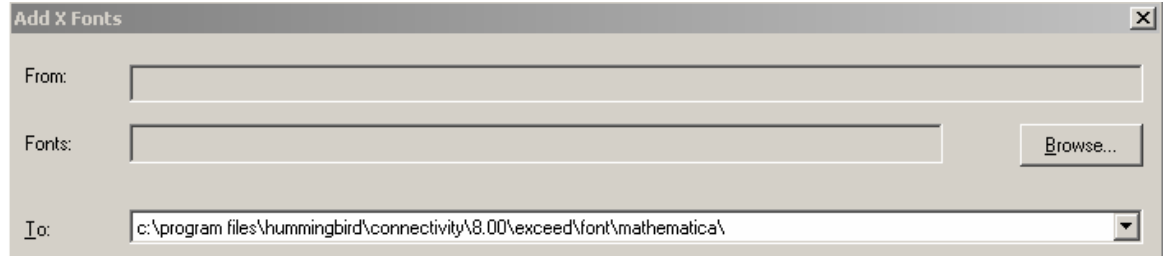
7.) Within the “FONT DATABASE: lfp.xdb – Xfonts” window, click on the “Add X Fonts...” button



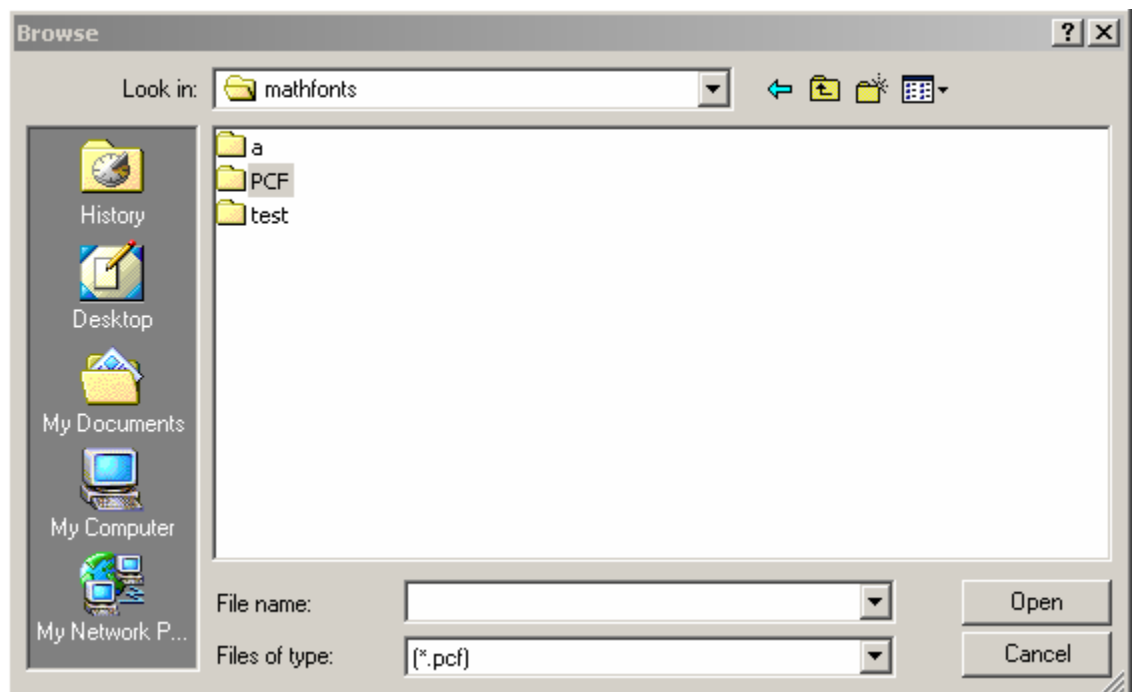
8.) Within the “ADD X FONTS” window, scroll down and select your newly created “mathematica” directory from within the “To:” field



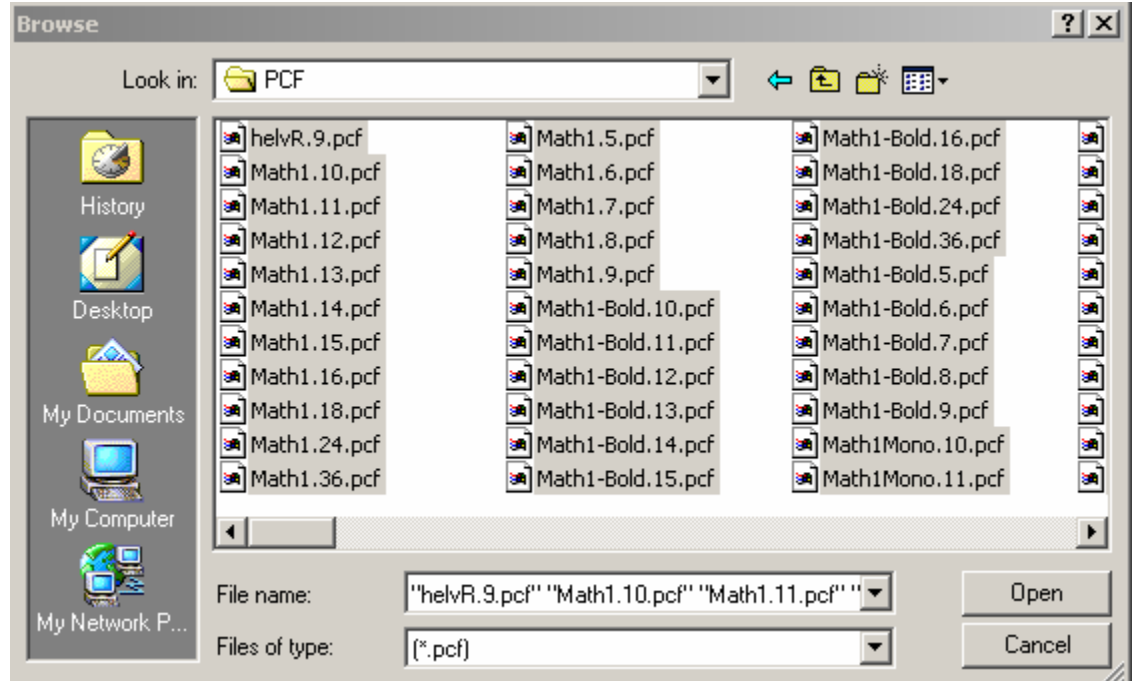
9.) Next, click the “Browse...” button in the “ADD X FONTS” window



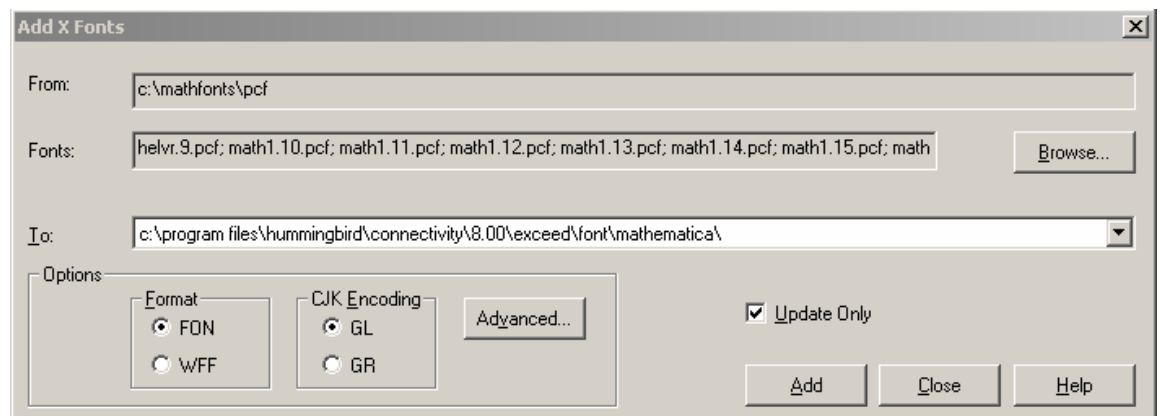
Change the “Files of type:” field to (*.pcf), and navigate to your unzipped, PCF fonts named directory in the “Browse” dialogue box



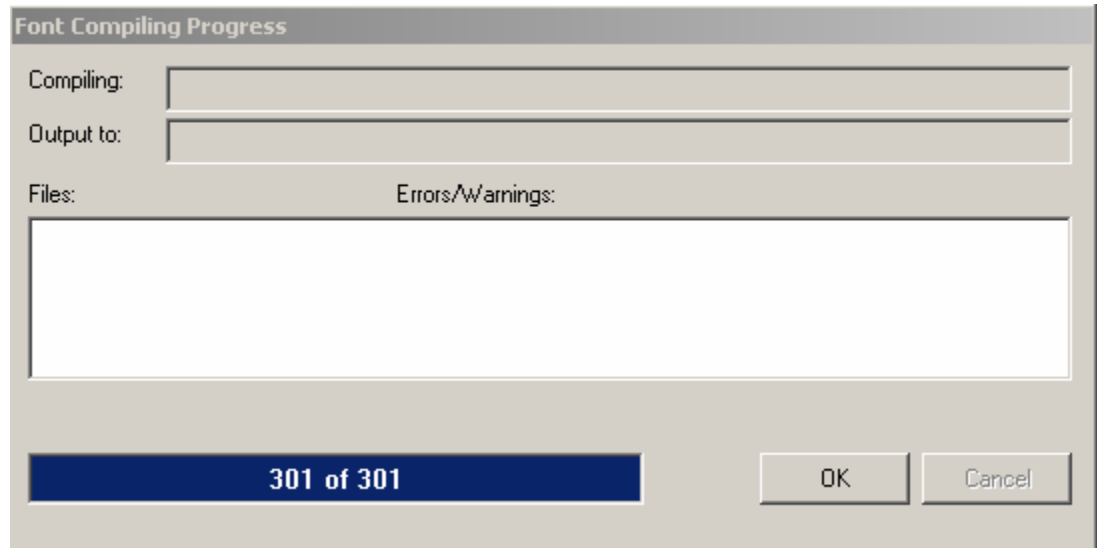
Select all (CTRL + A) and click “Open”



10.) The “ADD X FONTS” window will appear and each text field should display the following information:



Now, click the “Add” button. You should see a “FONT COMPILING PROGRESS” indicator window appear

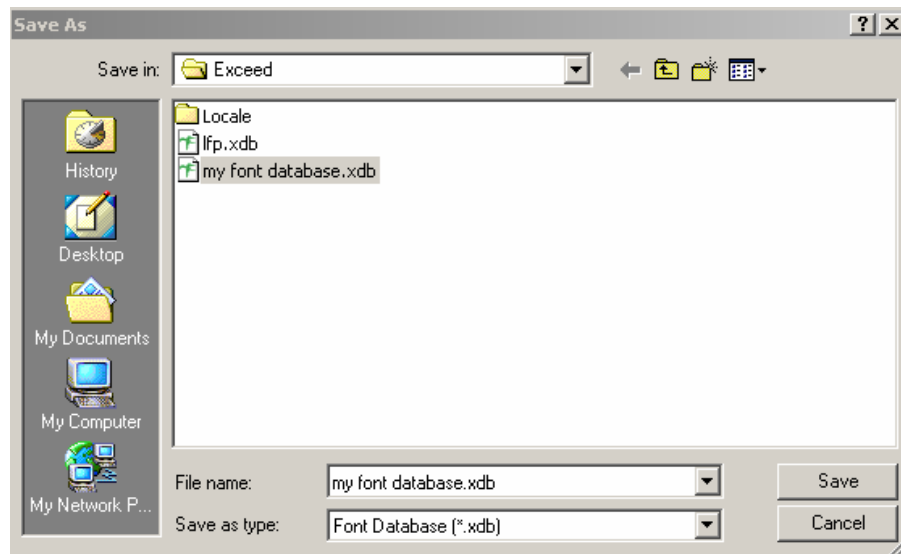


Click the “OK” button to close when done, you may receive the following application message:

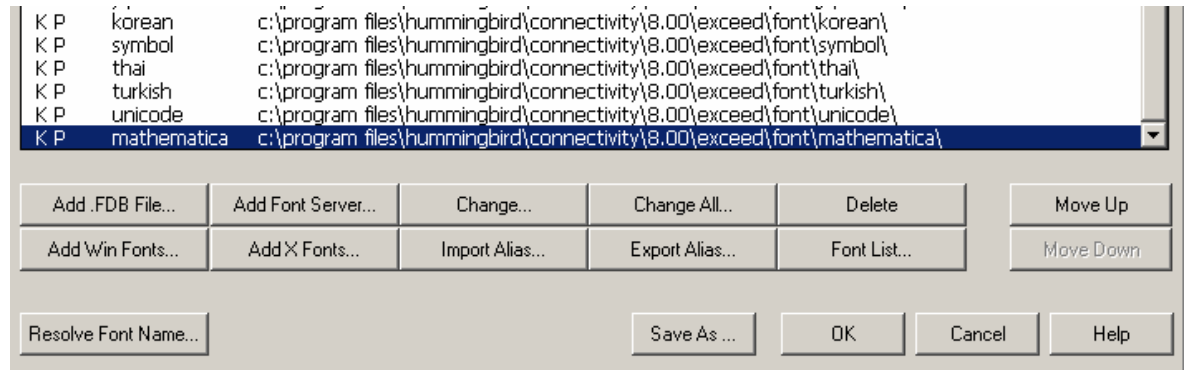
“font database file c:\documents and settings*username*\application data\hummingbird\connectivity\8.00\exceed\mathematica.fdb has been updated”

Click “OK”, then click the “Close” button to exit the “ADD X FONTS” window. Next, click the “Save As...” button in the “FONT DATABASE: lfp.xdb – Xfonts” window.

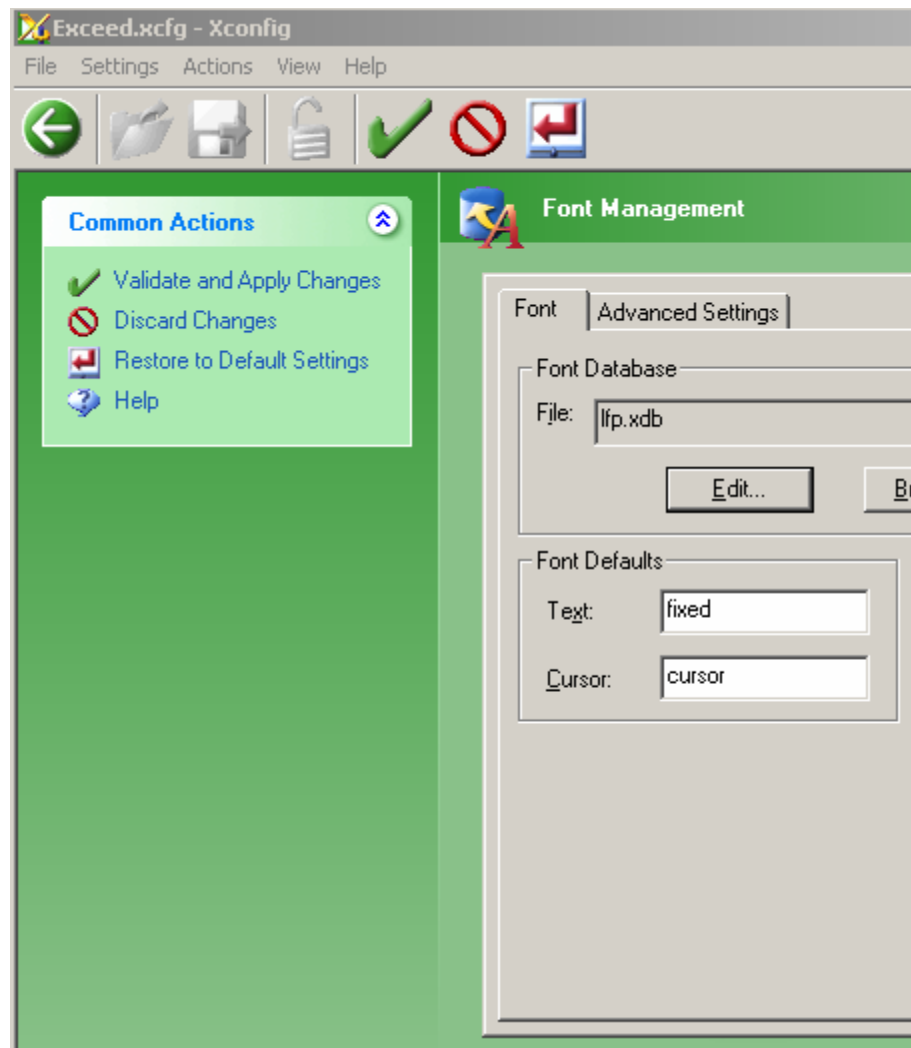
11.) You may choose to name your file, “my font database” in the “SAVE AS” dialogue window. Then click the “Save” button



12.) Click “OK” to close the “FONT DATABASE: lfp.xdb – Xfonts window



13.) Finally, under “COMMON ACTIONS” click, “VALIDATE AND APPLY CHANGES” to close. Close the Exceed.xcfg – Xconfig window



III. Start an x-windows session and launch Mathematica-

- 1.) For setup and configuration guidelines, please refer to HCS “HOW DO I” webpage at:

<http://groups.haas.berkeley.edu/HCS>

- 2.) Select the following links for instruction:

[Use Exceed for Unix XWindows Connectivity?](#)

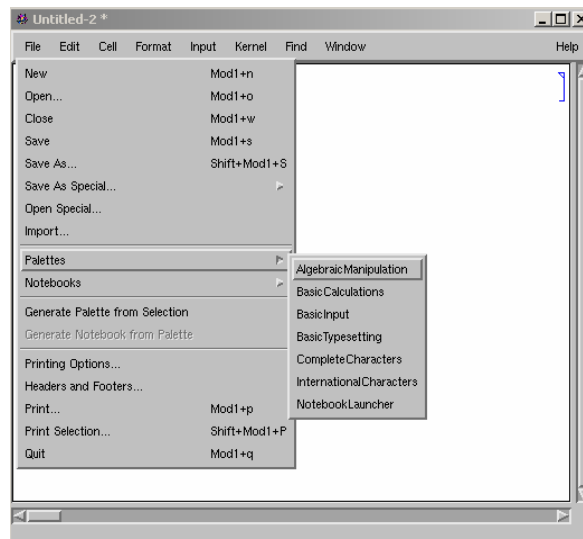
[Use the SSH Secure Shell Client to transfer files to/from Unix?](#)

NOTE Mathematica may balk about fonts not being installed properly.



Choose “Continue” anyway.

- 3.) Within the x-windows Mathematica program, go to FILE > PALETTES and choose from any of the sub-menu groups



- 4.) Choosing FILE > PALETTES > BASIC INPUT should display the following mathematical expressions toolbar



For technical support:

Please contact HCS helpdesk@haas.berkeley.edu or phone 510-642-0434.

Helpdesk hours of operation-

Phone 8am – 5pm Monday through Friday

Email or online system requests are taken 24 hours a day, 7 days a week.

Technical documentation by:

*John Smoot, Jr.
Programmer/Analyst II*

*Haas Computing Services
University of California, Berkeley*

- 03/26/03

(application screenshot images captured with HyperSnapDX 3.42.00)

*The following software described in this documentation are available from
campus download site-*

*Hummingbird Exceed v 8.0
<http://software.berkeley.edu>*

*HyperSnapDX 3.42.00
<http://software.berkeley.edu>*

*SSH Communications Secure Shell 3.2.x
<http://software.berkeley.edu>*