



## How Do I Install and Use an SSH Client?

### Secure Connections to an SSH Server

ECSM requires the use of SSH for encrypted electronic communications to the Bear research server. This helps prevent unauthorized account usage and helps ensure that your data is secure.

#### Uninstalling SSH.com's version of the Secure Shell Client:

The SSH client once provided by SSH.com is ***no longer maintained by the vendor or supported*** by ECSM, and its continued usage could pose a security risk to your workstation. If you are currently running the SSH.com client software, you should first remove this software before installing WinSCP.

#### I. Installing puTTY:

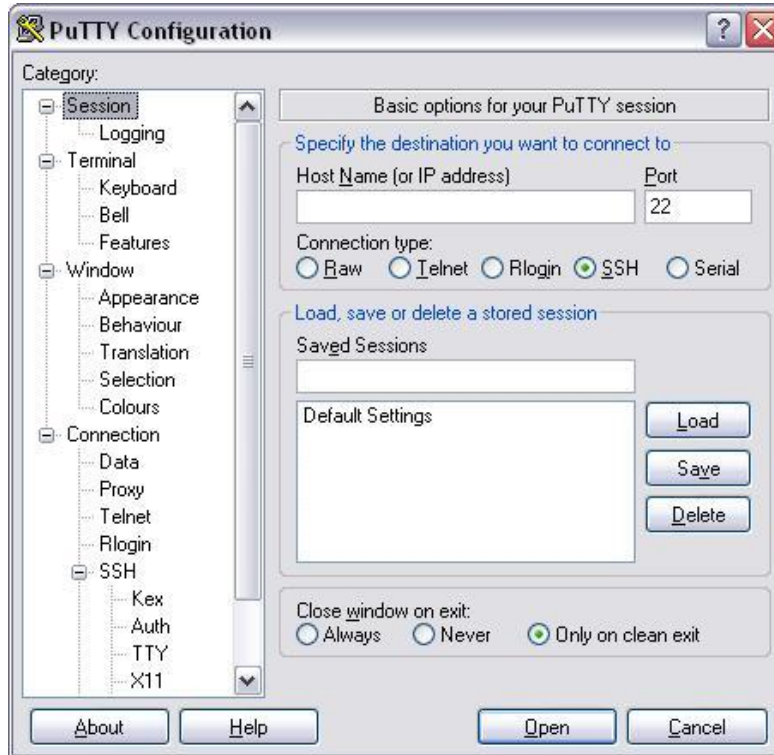
| Step | Procedure  |
|------|--|
| 1    | Go to:<br><a href="http://www.chiark.greenend.org.uk/~sgtatham/putty/download.html">http://www.chiark.greenend.org.uk/~sgtatham/putty/download.html</a><br>and download the latest version of the <b>puTTY installer</b> . |
| 2    | Save the file and note the location for the next step.   |
| 3    | Click " <b>Next&gt;</b> " (four times) to install puTTY into the default location.   |
| 4    | Click " <b>Install</b> " to install puTTY  |
| 5    | Click " <b>Finish</b> " to complete the installation of the puTTY client.  |

## II. Configuring puTTY to connect to Bear:

Once puTTY is installed, you can configure a profile to connect directly to Bear. Once a profile has been created, you can connect using only your password, without needing to enter the username, hostname or other settings each time you connect.

To Open puTTY go to **All Programs > PuTTY >  PuTTY**

When you first open puTTY, the following screen appears. From here you can modify settings and create connection profiles.



- 1.) Under "Session", type **bear.haas.berkeley.edu** in the "Host Name (or IP address)" field, and make sure the connection type is "SSH".
- 2.) Under "Connection" → "SSH" → "X11", check the box next to "**Enable X11 forwarding**" to allow the display of GUI windows in conjunction with eXceed.
- 3.) Under "Connection" → "SSH", ensure that "**Blowfish**" is the Encyption cipher. If "Blowfish" is not at the top of the list, select it and click the "Up" button to move it to the top of the list. Blowfish provides good encryption while offering faster data transfer rates compared to other encryption ciphers. This should help graphically-intensive programs such as XStata run faster via SSH.
- 4.) Under "Connection" → "Data", enter your username in the "**Auto-login username**" field. This will allow puTTY to enter your username for you upon connecting, but will still ask for your password.
- 5.) Back in the "Session" menu, type "Bear" in "Save Sessions" and click the "**Save**" button. To re-

connect to Bear, open puTTY and **double-click** on "Bear" under "Saved Sessions", (or click "Bear", "L<sub>o</sub>ad", and then "O<sub>o</sub>pen".) Note that more than one profile can be saved in puTTY. You could, for example, save several Bear profiles, each for a different username, etc.

### III. Optional Settings:

1.) Under "Window" → "Selection", select "Windows" for the "Action of mouse buttons:". This option more closely matches the behavior of the SSH.com client, and brings up a menu with a Right-click, instead of the default which is pasting with a right-click.

2.) Under "Window" → "Appearance", a good, readable, font to use is "Fixedsys", and under "Window" → "Colours", you can modify font/background colors as needed. A legible RGB color combination (green on black) is 0/255/0 for the Default Foreground, and 0/0/0 for the Default Background.

n.) There are several options available, choose the best one for you ...

---

Questions or problems regarding this 'How Do I' should be directed to:

Haas Enterprise Computing and Service Management Helpdesk

<http://helpdesk.haas.berkeley.edu>

[helpdesk@haas.berkeley.edu](mailto:helpdesk@haas.berkeley.edu)

510-642-0434

( toll-free - 866-642-0434 )

---