



How Do I Transfer Files to and from the Bear Research Server?

Secure File Transfer to Bear

Haas Enterprise Computing and Service Management (ECSM) requires the use of encrypted electronic communications to the Bear research server. This helps prevent unauthorized account access and ensures that your data transfer is secure.

We recommend **WinSCP** as a secure file transfer client for workstations running all versions of Windows. WinSCP provides an easy-to-use graphical interface for secure file transfer, and integrates well with the puTTY SSH client. For help using puTTY, please refer to the following link:

http://groups.haas.berkeley.edu/HCS/howdoi/install_putty.pdf

Uninstalling SSH.com's version of the Secure Shell Client:

The SSH client once provided by SSH.com is ***no longer maintained by the vendor or supported*** by ECSM, and its continued usage could pose a security risk to your workstation. If you are currently running the SSH.com client software, you should first remove this software before installing WinSCP.

I. Installing WinSCP:

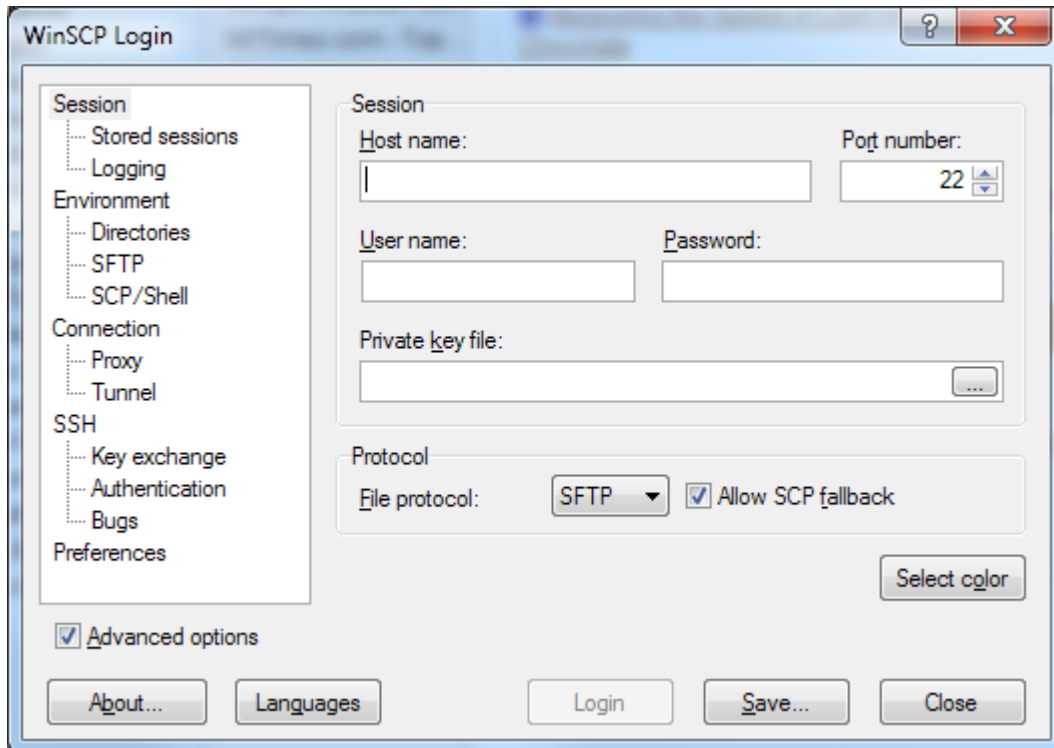
Step	Procedure
1	Go to: http://winscp.net/eng/download.php and download the latest version of the WinSCP Installation package .
2	Save the file and note the location for the next step. Run the installer file as an administrator and select the installation language. Click 'OK'.
3	Click " Next> " (five times) to install WinSCP into the default location, but do not install add-on packages if asked.
4	Click " Install " to install WinSCP
5	Click " Finish " to complete the installation of the WinSCP client.

II. Configuring WinSCP to connect to Bear:

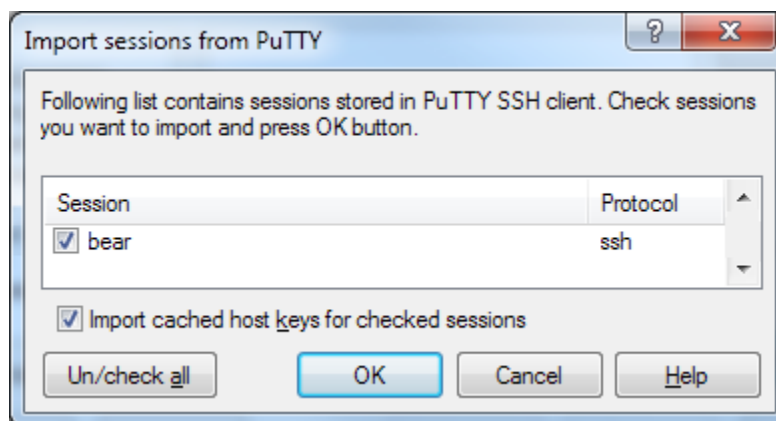
Once WinSCP is installed, you can configure a profile to connect directly to Bear. Once a profile has been created, you can connect using only your password, without needing to enter the username, hostname or other settings each time you connect.

To Open WinSCP go to **All Programs > WinSCP >  WinSCP**

When you first open WinSCP, the following screen appears. From here you can modify settings and create connection profiles.



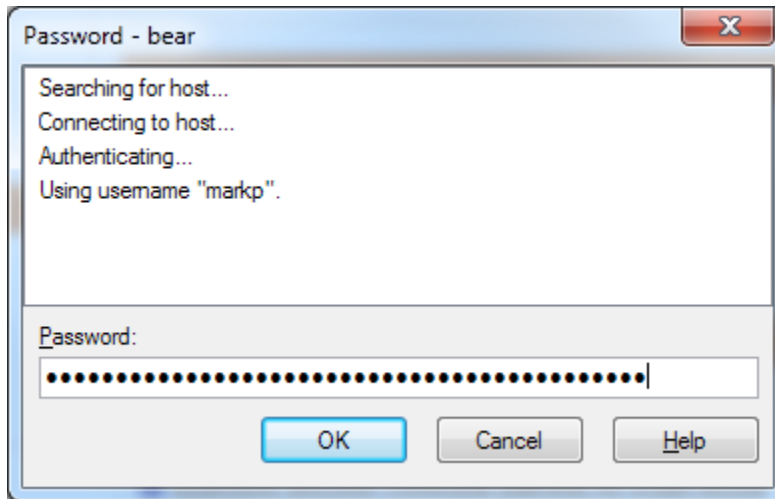
If you have previously used PuTTY to connect to Bear, and have saved a connection profile, you can import the profile by selecting **Session > Stored sessions > Tools > Import** (select 'Import host keys') > **OK** :



If you have not previously used connection profiles in puTTY or WinSCP, you can set one up in WinSCP by performing the following steps:

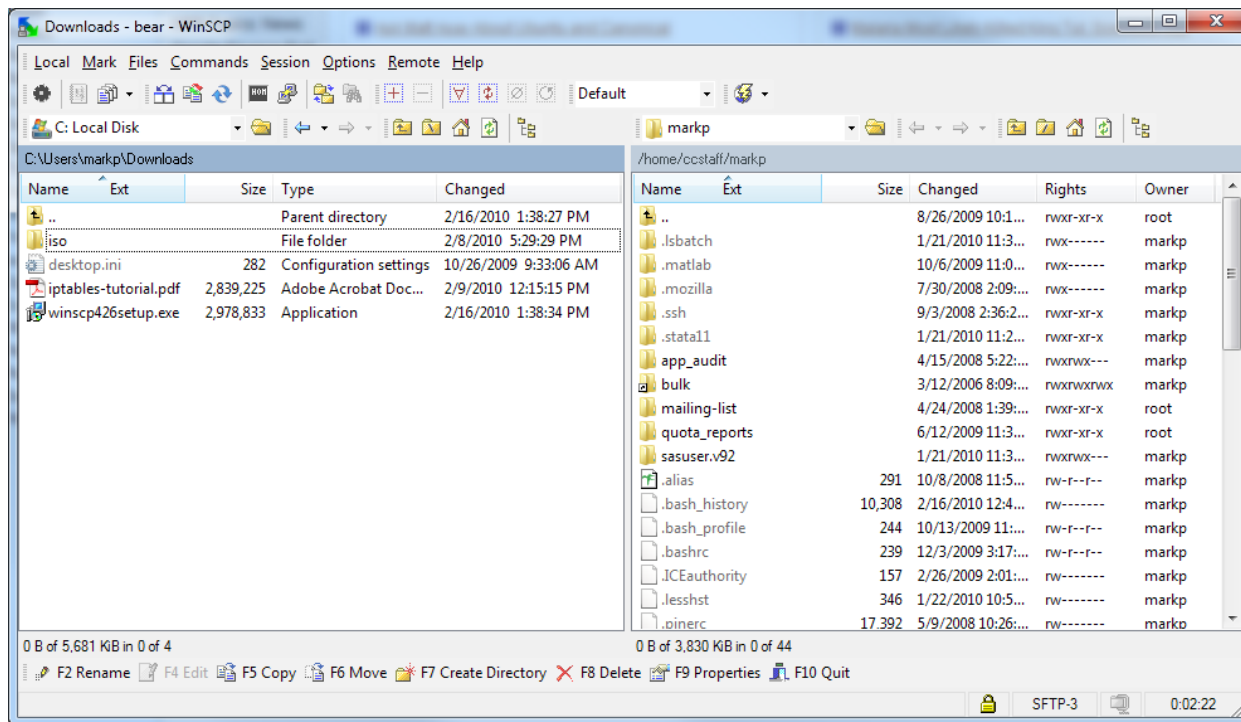
- 1.) Under "Session", type **bear.haas.berkeley.edu** in the "Host name:" field, and your login in the "User name" field. This will allow WinSCP to enter your username for you upon connecting, but will still ask for your password.
- 2.) Under "SSH", ensure that "**Blowfish**" is the Encryption cipher. If "Blowfish" is not at the top of the list, select it and click the "Up" button to move it to the top of the list. Blowfish provides good encryption while offering faster data transfer rates compared to other encryption ciphers.
- 3.) Click "Save...", and "OK". You will now see username@bear.haas.berkeley.edu in the "Stored sessions" list. Note that multiple profiles can be saved in WinSCP.

To connect to Bear, open WinSCP and **double-click** on "username@bear.haas.berkeley.edu", provide your password, and click "OK":



III. Using WinSCP to transfer files:

WinSCP is a graphical, secure, file transfer program that allows for drag-and-drop to and from a server. A sample interface is as follows, with the local workstation on the left, and the server on the right:



After transferring files, simply close the program to end the session.

Questions or problems regarding this 'How Do I' should be directed to:

Haas Enterprise Computing and Service Management Helpdesk

<http://helpdesk.haas.berkeley.edu>

helpdesk@haas.berkeley.edu

510-642-0434

(toll-free - 866-642-0434)