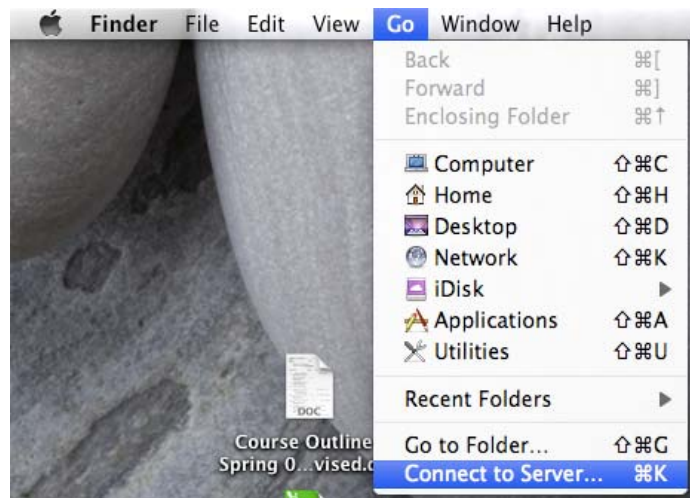




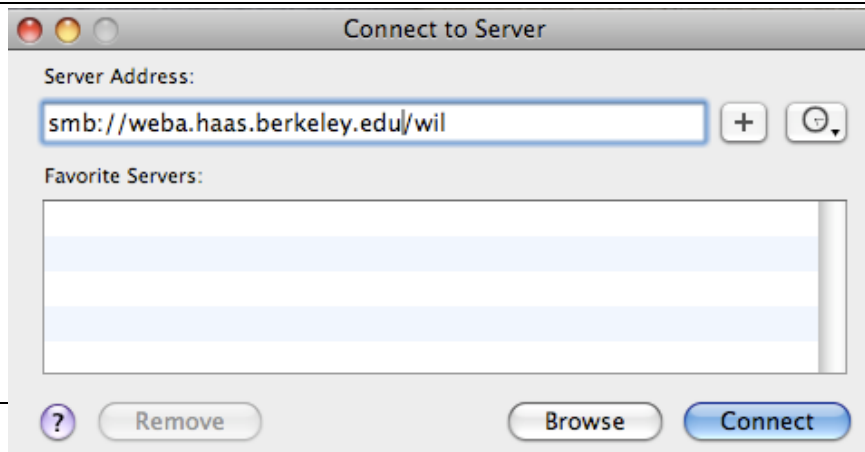
## How do I Map a Network Share/Drive on a Mac?

Before you start you will need to have the name of the server and the name of the share to which you would like to connect. For a list of common Haas shares that you can map, see the end of this document.

Step	Procedure
1	<p>In this example I will be using the server name “weba” and the share name will be “wil”. In windows the map is the following: <b>\\weba\wil</b> or the fully authenticated path is <b>\\weba.haas.berkeley.edu\wil</b></p> <p>On your mac computer open <b>finder</b>. If you double click on your hardrive finder will open. <b>Click</b> on the <b>Go</b> menu and select “<b>Connect to Server</b>”.</p>



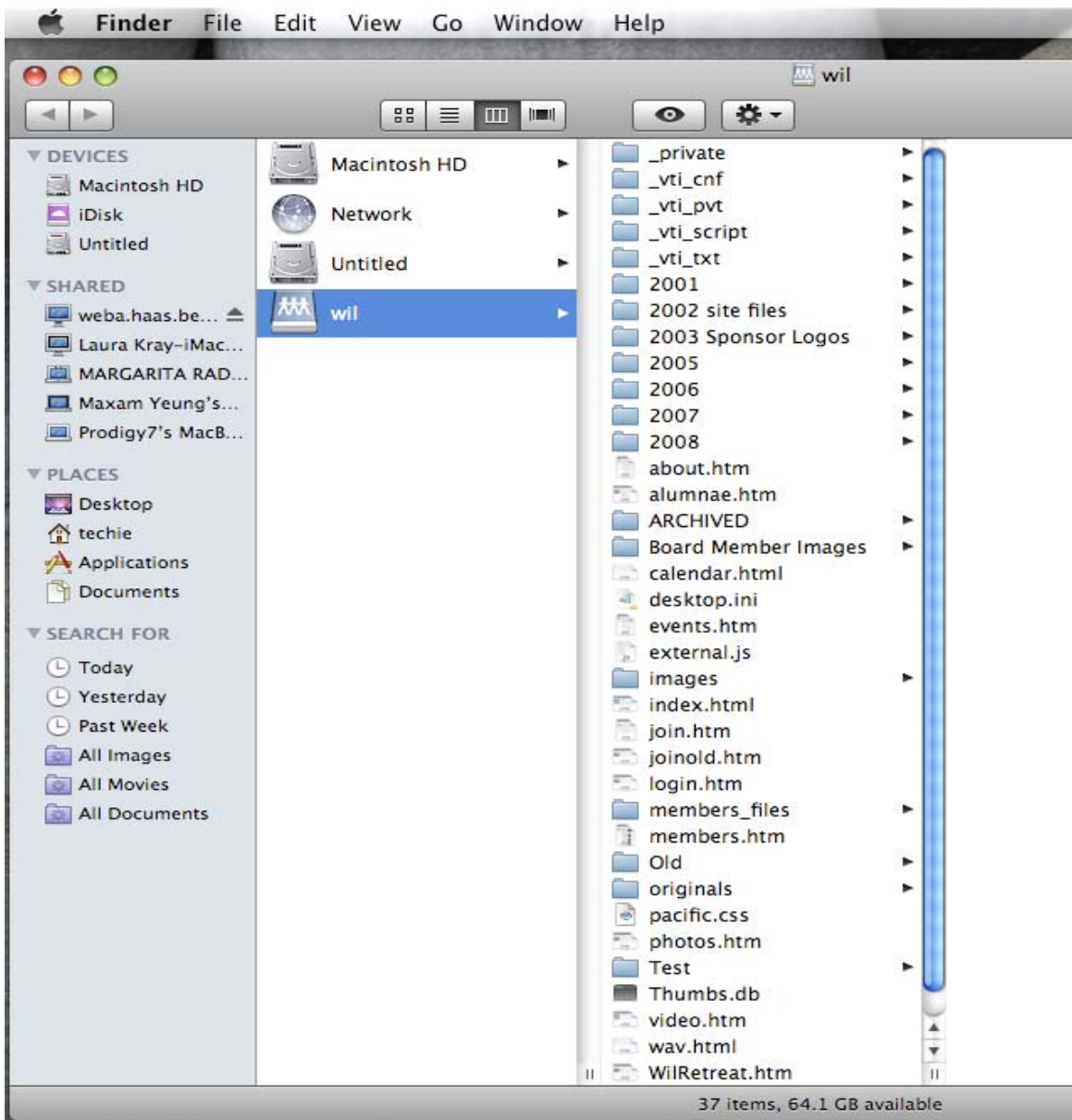
Step	Procedure
2	<p>Under <b>Server Address:</b> enter the path for the server in a URL format. For example if the windows path is \\weba.haas.berkeley.edu\wil, enter <b>smb://weba.haas.berkeley.edu/wil</b> This is the fully authenticated name for the share. <b>Click Connect</b> when done.</p> <p><b>Note:</b> <i>If you are at Haas you can enter <b>smb://weba/wil</b>, however if you then go home and try to reconnect to the share from there you will need to remap it again-- with the fully authenticated name. Also, to map a share from home you will need to be connected to the Cisco VPN before you try to map or open the share.</i></p>



Step	Procedure
3	<p>You will need to authenticate with your Haas credentials at the next screen. Enter your username and password in the following format:</p> <p>Name: <b>haas\username</b>                      Password: <b>Your Haas password</b></p> <p>Also check the box <b>“Remember this password in my keychain”</b> so that you don’t have to keep entering it when you need to access the share.</p> <p><b>Click Connect</b></p>



Step	Procedure
4	The share will open in Finder and you should be able to use it as you normally would.



To map your ....

H drive enter: **smb://hcs-data2.haas.berkeley.edu/username\$**

P drive: **smb://hcs-data.haas.berkeley.edu/public**

I drive: **smb://faculty.haas.berkeley.edu/username\$**