

# Samsung Digital Camera Operation

## Camera Kit

Included in your camera kit should be:



Samsung  
Camera



Power  
Adapter



A/V  
Cable



USB  
Cable



Ear-  
Phones



Quick  
Guide



SD  
Card



SD Card  
Reader



Carrying  
Case

## Before You Begin

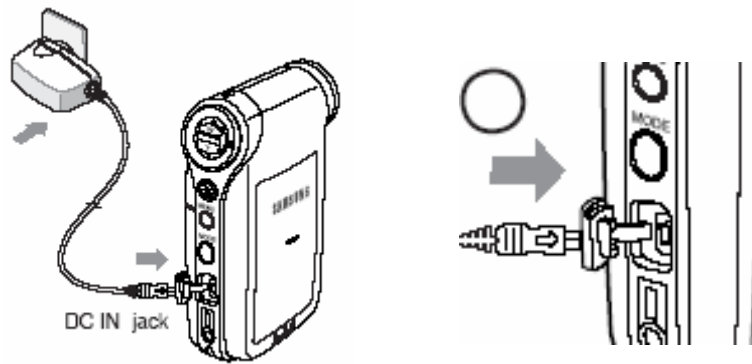
We can not guarantee the battery will be charged. You may want to use A/C power when using this camera. The battery will last approximately 1 hour and 20 minutes fully charged. If you want to use just battery power it is recommended that you plug the camera in and let the battery charge before use.

## Getting Started

### Powering the Camera

- A/C Power








Use the Power Adapter and plug into a wall outlet and plug other end into camera.



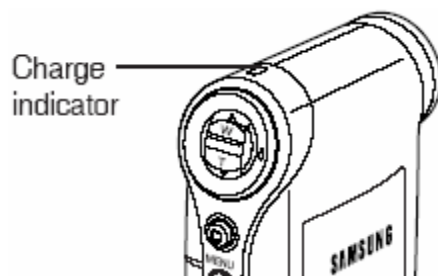
- Battery Power

Look at the battery indicator to see how charged the battery is.



Battery Level Indicator	State	Message
	Fully charged	-
	20~40% used	-
	40~60% used	-
	60~80% used	-
	80~95% used	-
	Exhausted(flickers) The device will soon turn off. Change the Battery Pack as soon as possible.	-
	(flickers) The device will be forced to turn off after 5 seconds.	"Low battery"

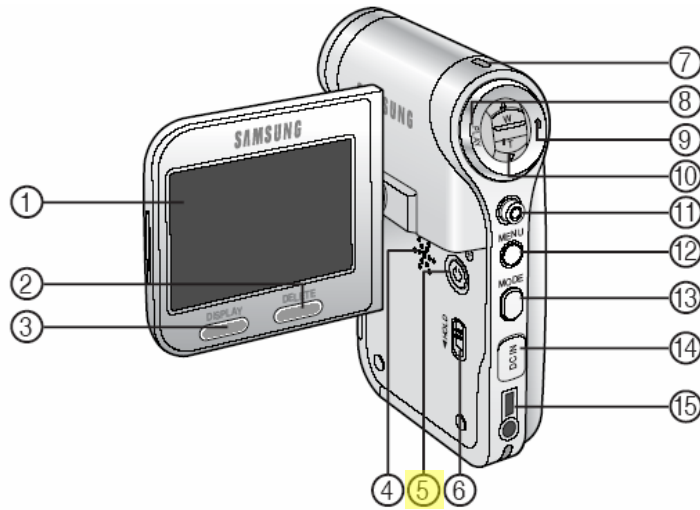
If the battery is not fully charged it is recommended that you charge it before using battery power. Attach the camera to A/C (follow instructions above) and keep the power turned off. Use the indicator light on the camera to tell when the battery is fully charged.



**Green – Fully Charged**

**Orange – Battery is Charging**

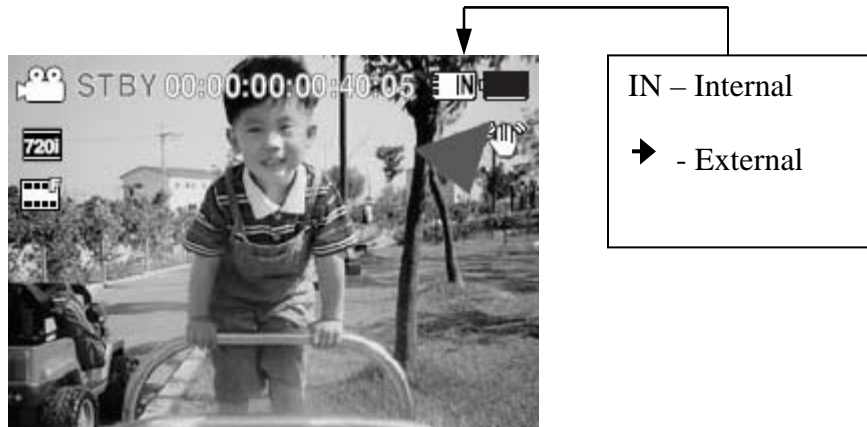
- **Turning the Camera On**  
Pull the LCD screen out; it will open 90 degrees from its original position. Turn the screen counter-clockwise 90 degrees so that the LCD screen is facing the back of the camera. Press the power button under the LCD screen.



## Memory Selection

- Internal Memory

If there is no SD chip in the camera the camera will use the internal memory. If you there is a SC chip in the camera you can choose which one you prefer to use. The indicator on the top right of the LCD screen will tell you weather internal or external is selected.



The amount of record time will depend on the video quality settings on the camera.

**512 Mb (internal):**

Frame Size	Normal	Fine	Super Fine
352	1 hr, 5 mins	32 mins	21 mins
720	32 mins	21 mins	14 mins

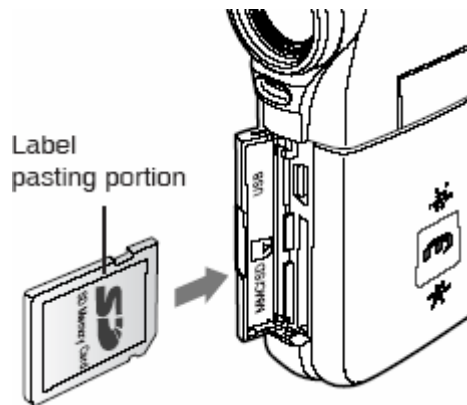
**2 Gb SD Memory Chip:**

Frame Size	Normal	Fine	Super Fine
352	4 hrs, 20 mins	2 hrs, 10 mins	1 hr, 27 mins
720	2 hrs, 10 mins	1 hr, 27 mins	58 mins

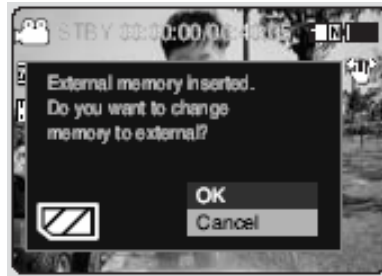
**4 Gb SD Memory Chip:**

Frame Size	Normal	Fine	Super Fine
352			
720			

- External Memory  
External memory requires an SD chip. Power the camera ON. Open the front panel cover. Insert the SD chip, pressing it in to make sure it is completely in the camera. Close the front panel.

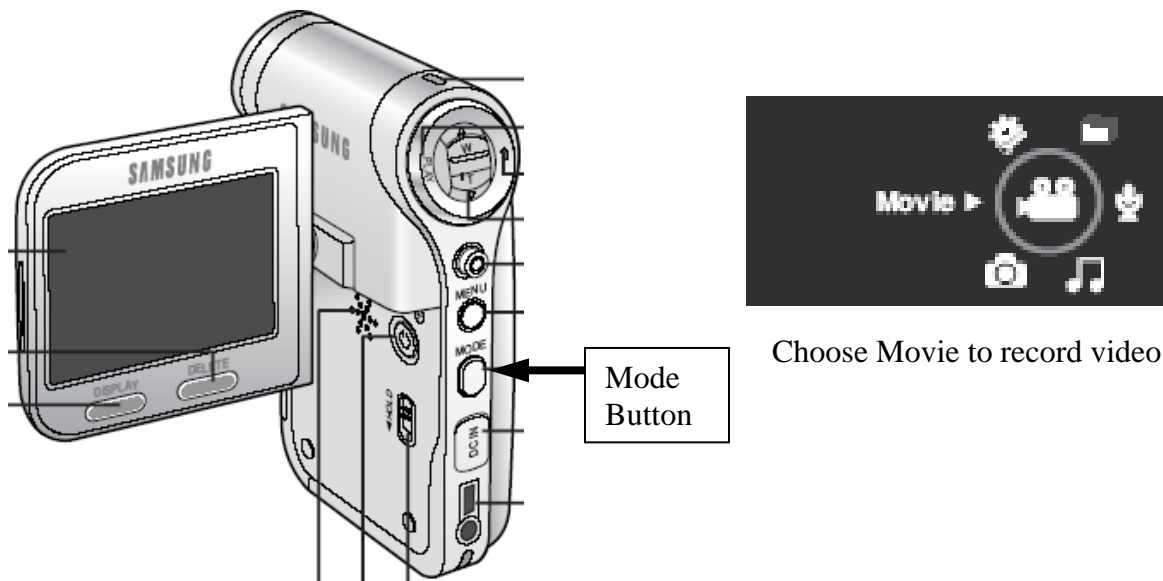


Once the card is inserted a message will appear on the LCD screen asking if you want to switch to external memory. Choose OK and the camera will now record on the SD chip.

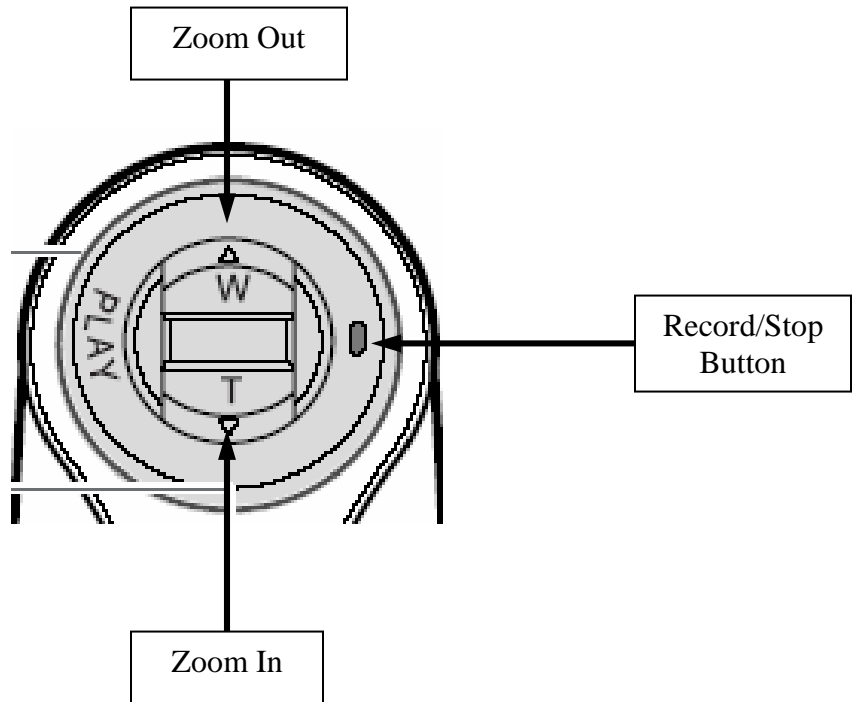


## Recording Video

Press the mode button on the back of the camera. A display will appear on the LCD panel. Continue to press the mode button until the icon of a movie projector is selected. The icon will be in the center of the wheel and it will say movie.



Use the function button to zoom in or out to get your shot. Once you have your shot as you want it, press the record button to start recording. To stop recording press the record button again.



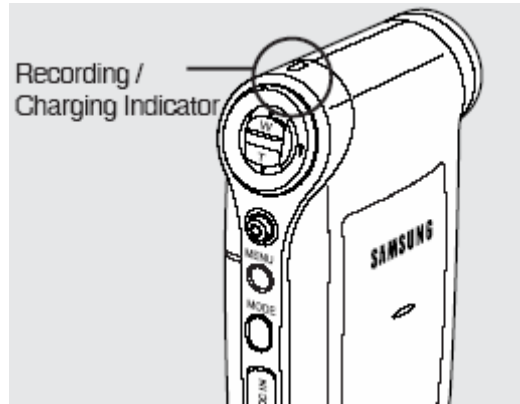
You can tell if the camera is stopped or recording by looking at the LCD panel or the recording indicator on top of the camera. If the display shows STBY and the light is blue the camera is stopped. If the display shows Recording and the light is red it is recording.



Camera is in standby mode and is not recording.



Camera is recording video.



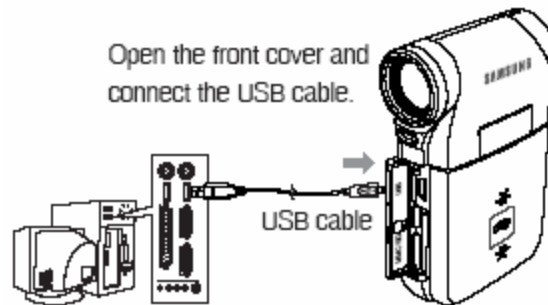
**Blue Light** – camera is on but not recording

**Red Light** – camera is recording video

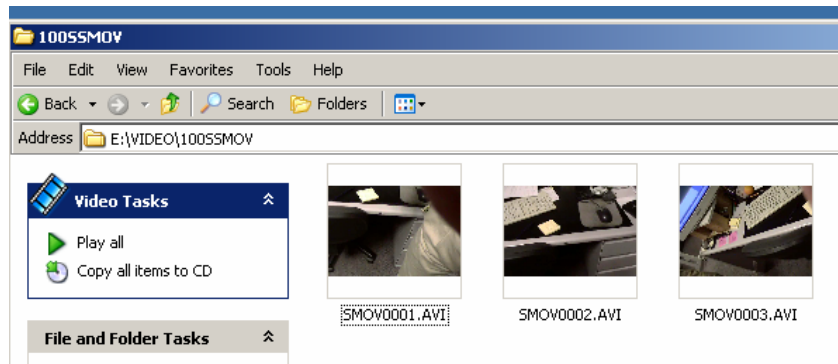
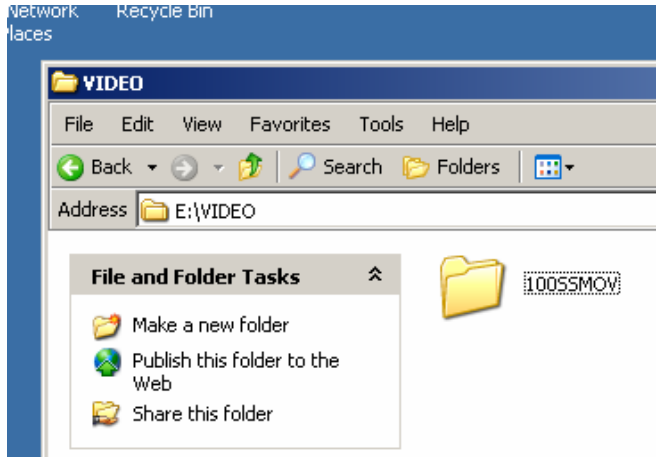
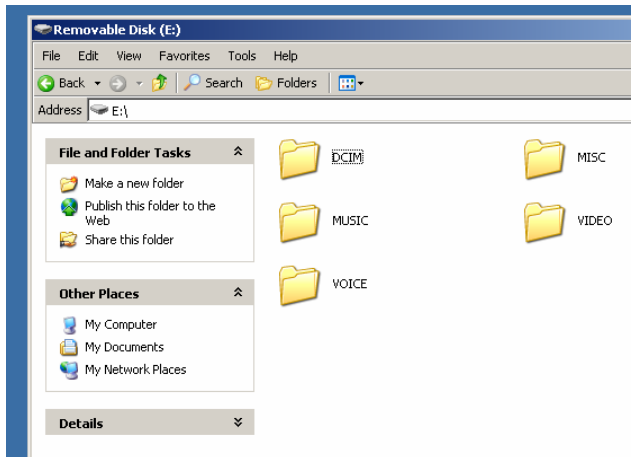
## Retrieving Video

### **From Internal Memory**

Turn on the camera, open the front panel and connect the camera to your computer using the USB cable.



Once the camera is connected open My Computer and click on the drive the camera is connected to, will probably say Removable Disk. Choose the video folder and then the 100SSMOV folder. Your video will be in this folder labeled as SMOV followed by a four digit number. Drag your video out of this folder onto your computer. Once the video has been copied to your computer you can click on the file, press F2 and rename your video.



## From External Memory

When you are finished recording your video, turn the camera off, open the front panel, press the SD chip and it will pop out enough to grab and remove the chip from the camera. Insert the SD chip into the SD reader and insert the SD reader into a USB port on a computer.

Once the SD reader has been inserted open My Computer and click on the drive the SD reader is associated with, will probably say Removable Disk. Choose the video folder and then the 100SSMOV folder. Your video will be in this folder labeled as SMOV followed by a four digit number. Drag your video out of this folder onto your computer. Once the video has been copied to your computer you can click on the file, press F2 and rename your video.

## Viewing Your Video

The computers in the following rooms have the appropriate video codec to view your video:

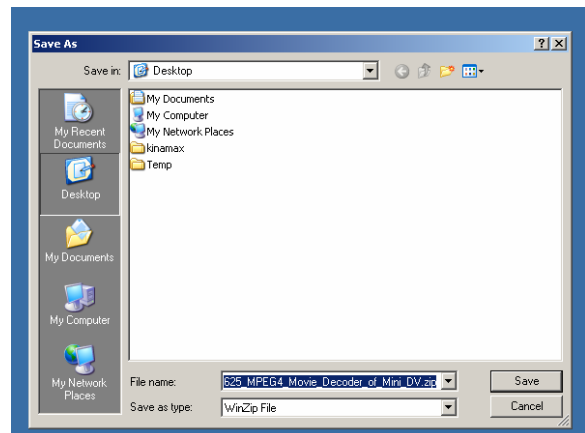
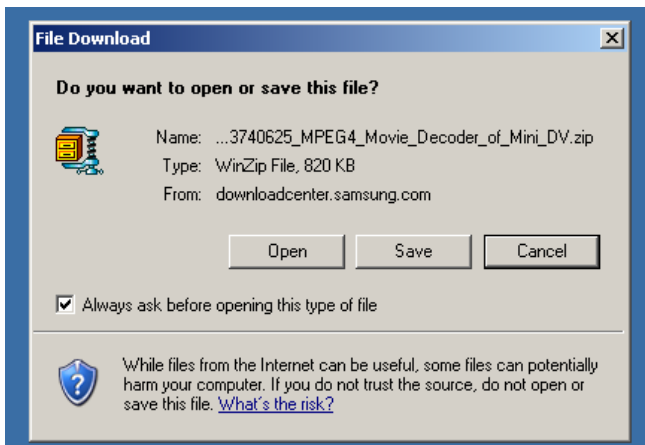
Library Group Study Rooms  
Bank of America Forum  
S300T

In order to view your video on any other computer you will have to download and install the appropriate video codec to your computer.

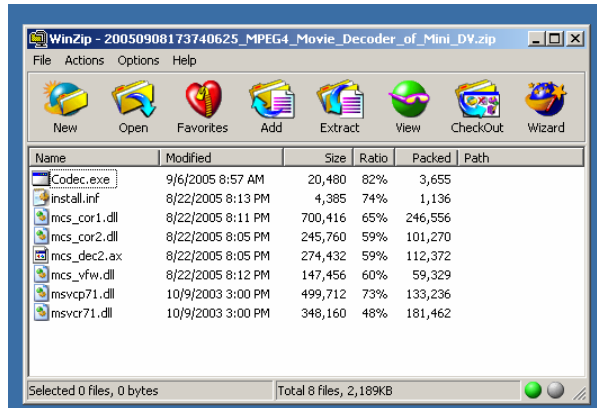
Click on or cut and paste the following link into your web browser

[http://org.downloadcenter.samsung.com/downloadfile/ContentsFile.aspx?CDSite=SS&CttFileID=626510&CDCttType=DR&ModelType=N&ModelName=SC-X205L&VPath=DR/200509/20050908173740625\\_MPEG4\\_Movie\\_Decoder\\_of\\_Mini\\_DV.zip](http://org.downloadcenter.samsung.com/downloadfile/ContentsFile.aspx?CDSite=SS&CttFileID=626510&CDCttType=DR&ModelType=N&ModelName=SC-X205L&VPath=DR/200509/20050908173740625_MPEG4_Movie_Decoder_of_Mini_DV.zip)

A dialogue window will pop up, click on Save. A new window will pop up asking where to save the file, save the file to your desktop.



Once the file has completely downloaded, open it. Create a new folder on the desktop and drag all of the contents from the downloaded zip file into the new folder.



Double click on the file named codec.exe, a window will pop up stating that the software has not passed Windows logo testing, click on the button that says Continue Anyway. Once the codec has been installed a window will pop up telling you it is complete. You will now be able to view your videos.

